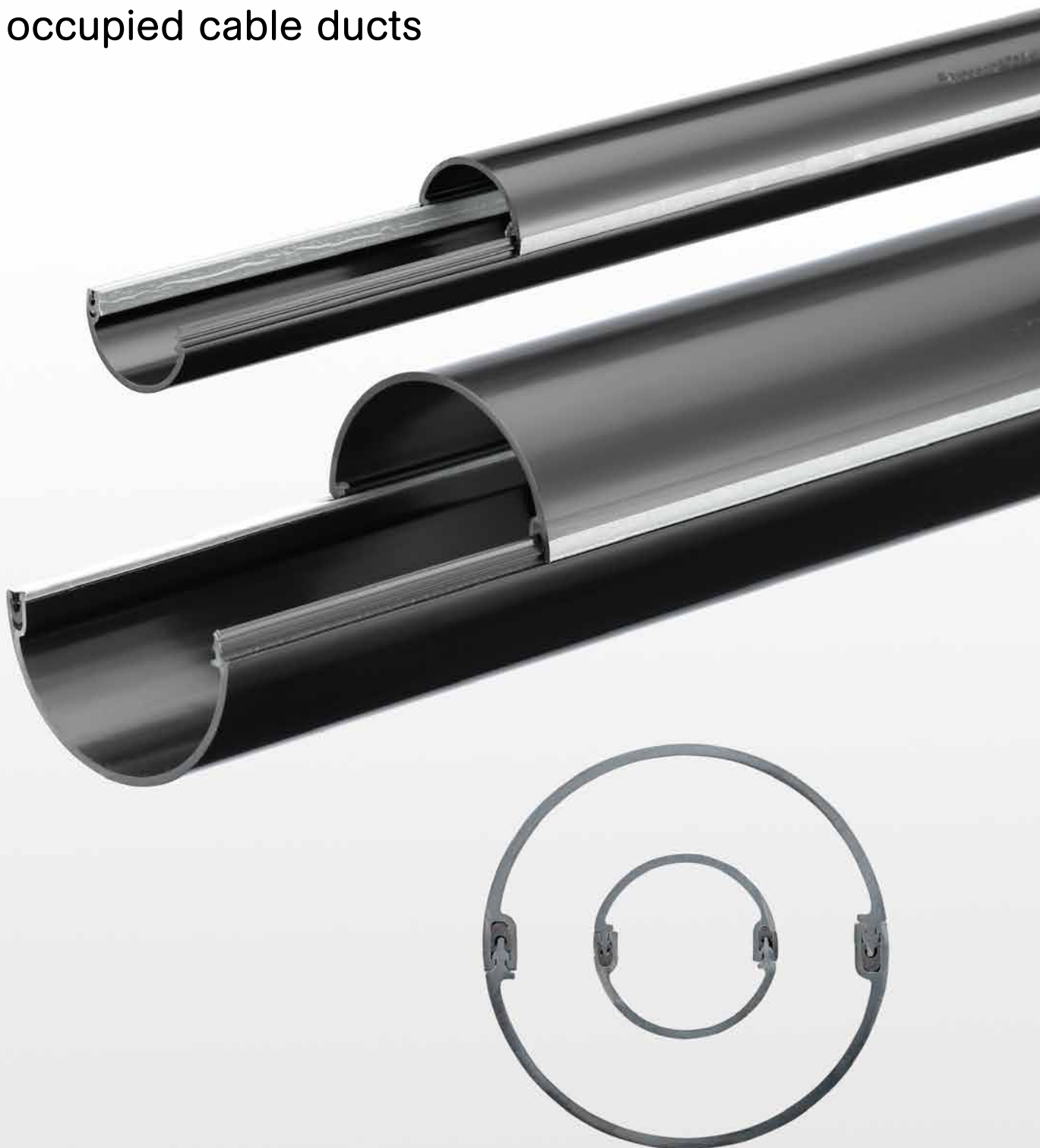


Split duct system

Safe repairing of
occupied cable ducts



Split duct system

Split ducts

Pressure-tight and divisible repairing solutions

6

Connectors

Divisible, gas- and water-tight fittings

7

Assembly tools

For an expert assembly

8

Split duct bends

Divisible, gas- and water-tight fittings

9

Branches

Divisible, gas- and water-tight fittings

10

Repairing sleeves

Divisible, gas- and water-tight fittings

11

Introduction: Patented products for repairing, pictures of practical experience

Split ducts

6



Connectors

7



Assembly tools

8



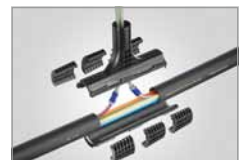
Split duct bends

9



Branches

10



Repairing sleeves

11



Split duct system: Optimum choice for repairs and more

In case a cable duct is damaged the gas- and water-tight repair must be carried out as quickly and economically as possible. Also for branching off single speed•pipe® from the overall system or for existing pipe ways, time and cost saving solutions are needed which can be realised in practice. Exactly for this reason gabocom has developed the proven split duct system. In addition to split ducts this system also comprises connectors and split duct branches in the dimensions 32, 40, 50, 110 and 125, as well as tools for the user-friendly installation.

On the following pages you learn more about the split duct system. Your personal contact person will advise you and will accompany you on your way to the solution that exactly meets your demands.

The advantages of the split duct system at a glance:

Quick repair without any network interruptions

- Repairs and installation works can be carried out quickly and cost-effectively.
- In the meantime occupied ducts may continue to be used without any interruptions of the signal.

Fulfillment of all route requirements

- All fittings are manufactured out of high-quality materials and can even be connected to manholes without any problems.
- They are divisible, tensile, gas- and water-tight.
- With their gas- and water-tightness of 0.5 bar they fulfill the standard of telecommunication companies.
- The dimensions 32, 40 and 50 also are suitable for blowing in with a compressor pressure of up to 10 bar.

Proven solutions for practice



Here gabocom split ducts are laid in a pipe way.



This picture shows the application in practice at close proximity.



Occupied pipe ways can be repaired quickly and economically.



Split ducts

Product advantages

- The split ducts KKHR were developed by gabocom for the pressure-tight repair of empty ducts or ducts occupied with cables or speed•pipe®.
- They are suitable for the gas- and water-tight sealing of blow-in points.
- They consist of two half shells manufactured out of high-quality PVC-U.
- The easy installation facilitates the branching off pipeline routes.

Fittings

- Connectors 7
- Assembly tools 8

Ordering data

Term	D×s (mm)	Length (mm)	Gas- and water-tight up to	Pcs. / unit	Pcs. / pallet	Item no.
KKHR 32	32×1.8	2000	0.5 bar permanent (10 bar / 30 min.)	2	84	12195
KKHR 40	40×1.9	2000	0.5 bar permanent (10 bar / 30 min.)	2	68	09956
KKHR 50	50×2.4	2000	0.5 bar permanent (10 bar / 30 min.)	3	51	09957
KKHR 110	110×3.2	2000	0.5 bar	3	78	14149
KKHR 110	110×3.2	6000	0.5 bar	3	78	04709
KKHR 125	125×3.7	3000	0.5 bar	4	52	05298
KKHR 125	125×3.7	6000	0.5 bar	4	52	05299



Split duct sleeve KKHRM and connector EBM

Product advantages

- The connector EBM and the split duct sleeve KKHRM are used for the gas- and water-tight connection of split ducts and ducts.
- The connectors EBM are resistant to tensile.
- Both fittings are out of PVC-U and are divisible.

Fittings

- Split ducts 6
- Assembly tools 8

Ordering data

Term	D (mm)	Gas- and water-tight up to	Pcs. / unit	Item no.
EBM 32	32	0.5 bar permanent (10 bar / 30 min.)	12	10777
EBM 40	40	0.5 bar permanent (10 bar / 30 min.)	12	10778
EBM 50	50	0.5 bar permanent (10 bar / 30 min.)	12	10779
KKHRM 110	110	0.5 bar	12	05891
KKHRM 125	125	0.5 bar	12	05695



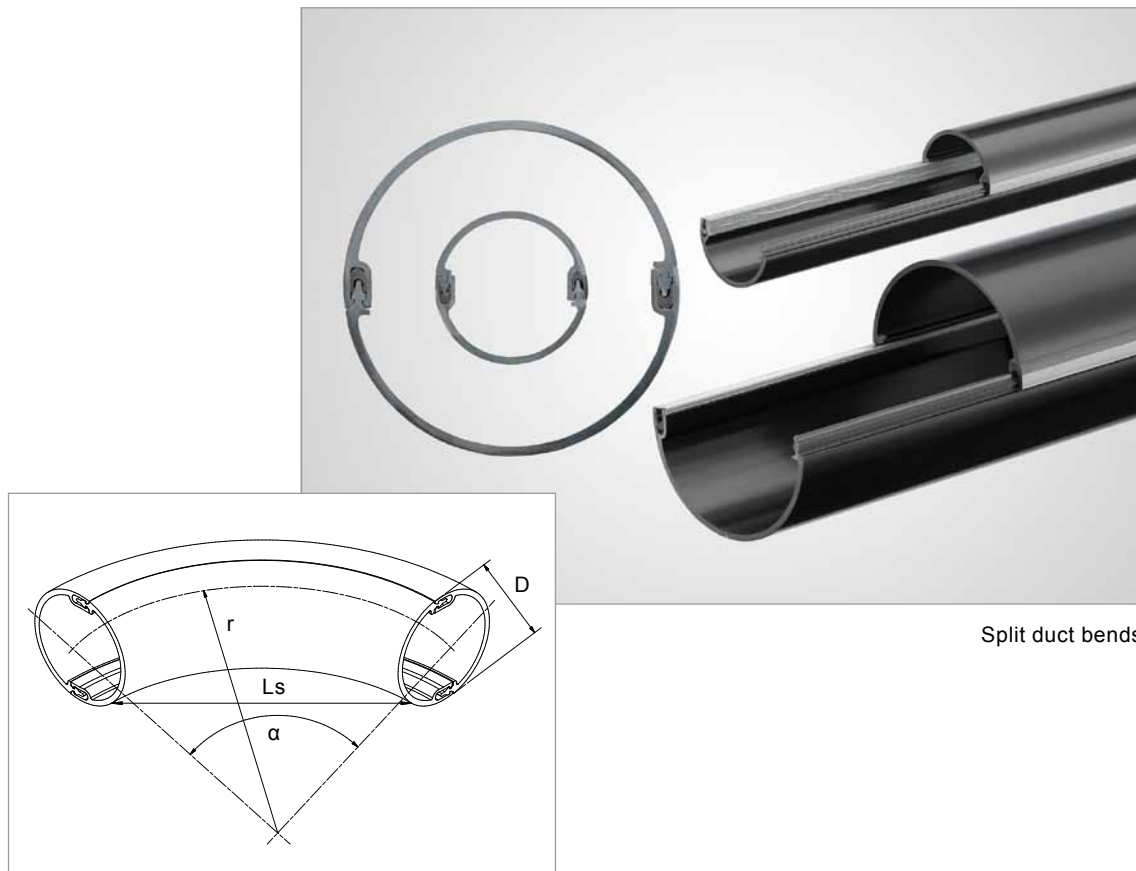
Assembly tool

Product advantages

- The assembly tools KKHRG are divisible.
- They are used for the professional assembly of the gabocom split ducts.

Ordering data

Term	D (mm)	Pc. / unit	Item no.
KKHRG 32	32	1	05022
KKHRG 40	40	1	04179
KKHRG 50	50	1	07624
KKHRG 110	110	1	01930
KKHRG 125	125	1	09747



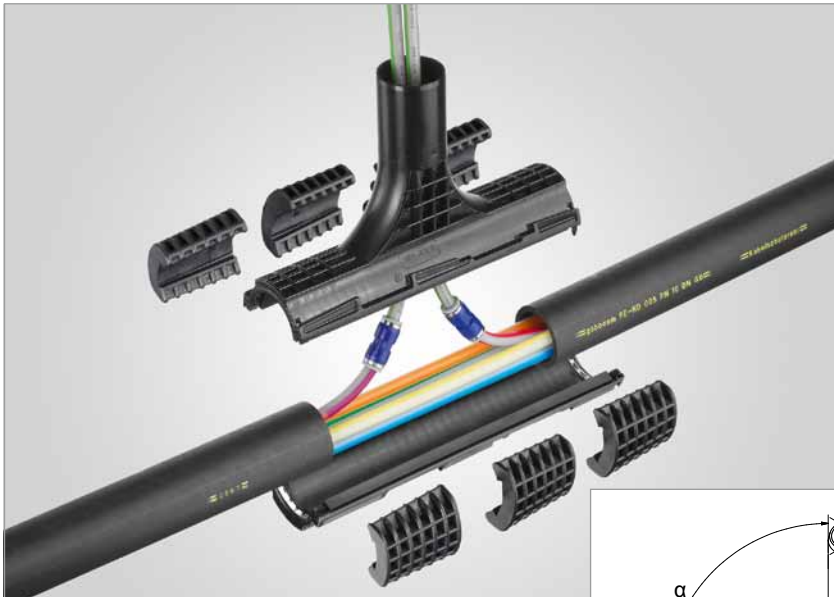
Split duct bends

Product advantages

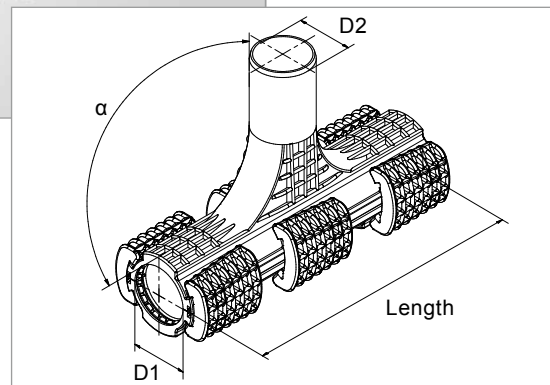
- The divided split duct bends KKHRB are used for repairing ducts which are laid in a bend due to changes of the pipe ways or to height differences.
- They consist of PVC-U and are gas- and water-tight up to 0.5 bar.

Ordering data

Term	D (mm)	r (mm)	α	Ls	Pc. / unit	Item no.
KKHRB 50 type I	50	1000	90°	1379	1	04765
KKHRB 50 type II	50	3100	45°	2776	1	04763
KKHRB 110	110	1000	90°	1336	1	05067
KKHRB 110	110	1000	45°	723	1	05068
KKHRB 110 type I	110	2710	45°	2181	1	04757
KKHRB 110 type II	110	3340	45°	2706	1	04754
KKHRB 110 type III	110	4040	45°	3252	1	04750
KKHRB 110 type IV	110	4810	45°	3893	1	04741
KKHRB 110 type V	110	6070	45°	5148	1	04739



Split duct branch 50 / 50-90°



Product advantages

- By means of the divided split duct branch HRMA and split duct double branch HRM-DA, speed·pipe® or cables are safely branched off a PE / PVC duct.
- They are gas- and water-tight up to 0.5 bar.

Ordering data

Term	D1 (mm)	D2 (mm)	α	Length (mm)	Pcs. / unit	Item no.
HRMA 32 / 32-30°	32	32	30°	261	6	42174
HRMA 40 / 32-30°	40	32	30°	125	6	01034
HRMA 40 / 40-90°	40	40	90°	261	6	10315
HRMA 50 / 32-30°	50	32	30°	125	6	00486
HRMA 50 / 50-30°	50	50	30°	261	6	04621
HRMA 50 / 50-90°	50	50	90°	261	6	00983
HRMA 110 / 50-30°	110	50	30°	300	5	00288
HRM-DA 40 / 2×32-30°	40	32	30°	125	6	01043
HRM-DA 50 / 2×32-30°	50	32	30°	125	6	01045



Repairing sleeve 110

Product advantages

- The divided repairing sleeves EBM-R and RM are applicable for the repair of light damages of empty ducts or ducts occupied with cables.
- They are gas- and water-tight up to 0.5 bar.
- The EBM-R 32, 40 and 50 are resistant to tensile.

Ordering data

Term	D (mm)	Length (mm)	Pcs. / unit	Item no.
EBM-R 32	32	260	6	42233
EBM-R 40	40	260	6	10316
EBM-R 50	50	260	6	00997
RM 110	110	300	12	11188